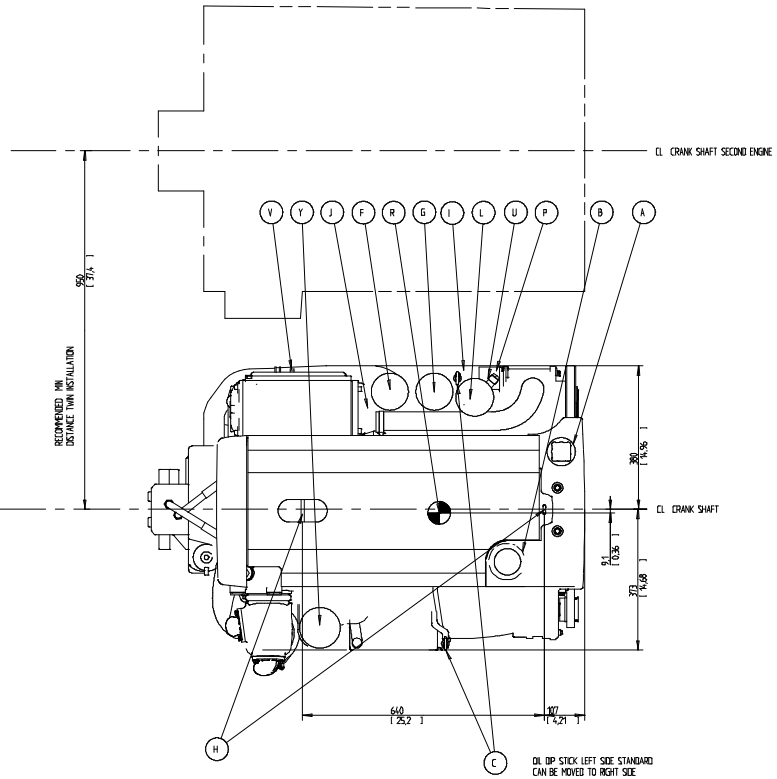
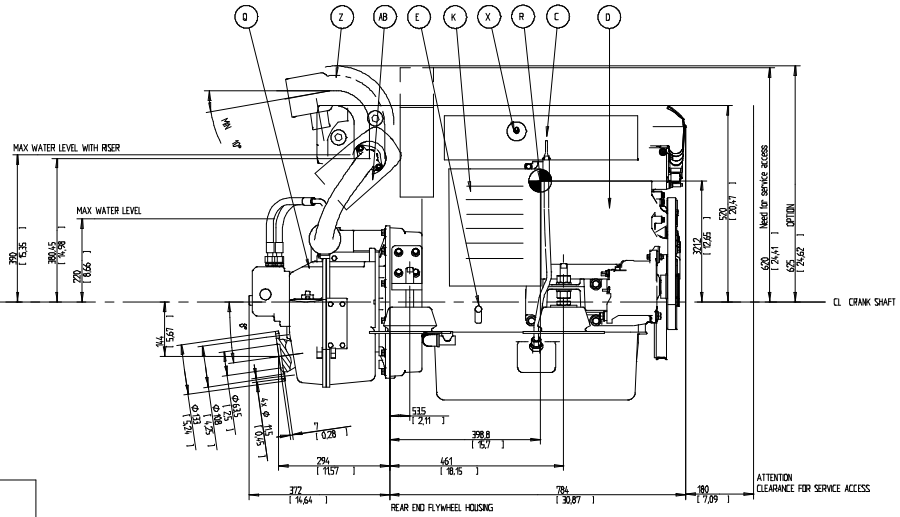
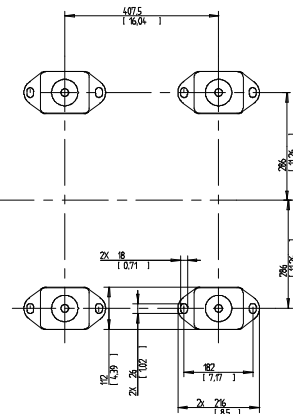
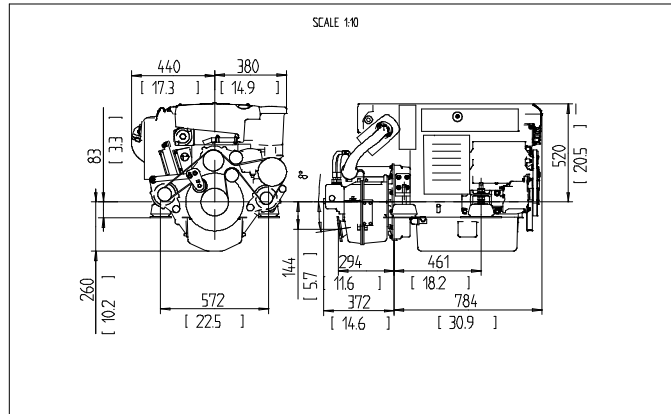
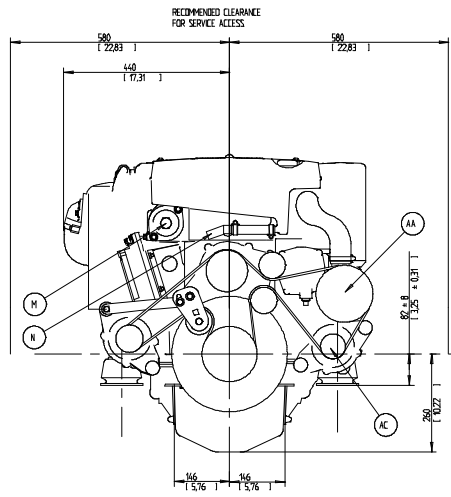


- (A) WATER FILLER CAP, FRESH WATER
- (B) OIL FILLER CAP, ENGINE
- (C) OIL DIP STICK, ENGINE LEFT OR RIGHT SIDE MOUNTED
- (D) ECU CONTROL UNIT
- (E) OIL DRAIN (WITH PUMP), ENGINE Ø125
- (F) OIL FILTER MAIN
- (G) OIL FILTER BYPASS
- (H) LIFTING EYE
- (I) WATER DRAIN, FRESH WATER
- (J) WATER DRAIN, SEA WATER
- (K) AIR FILTER
- (L) FUEL FILTER
- (M) HOT WATER OUTLET
- (N) HOT WATER INLET
- (P) SEA WATER INLET Ø38
- (R) OIL DIP STICK REVERSE GEAR
- (S) CENTRE OF GRAVITY
- (T) WATER INLET
- (U) OIL DRAIN REVERSE GEAR
- (V) FUEL INLET CONNECTION
- (W) FUEL RETURN TO TANK
- (X) ENGINE STOP
- (Y) CRANK CASE VENTILATION
- (Z) EXHAUST RISER Ø 102 (4") (OPTION)
- (AA) SEA WATER PUMP
- (AB) EXHAUST ELBOW Ø102 (4")
- (AC) EXTRA ALTERNATOR



SCALE 15

| | | |
|---|--|----------------|
| <p>NO PARTS IDENTIFICATION SYMBOLS TO BE USED UNLESS SPECIFICALLY INDICATED BY DIMENSION LINE OR CALLOUT.</p> <p>ENGINE DIMENSIONS DIN 77456:3A</p> <p>Drawn by: ERIKSSON DRAWING Best available print</p> | | <p>3591351</p> |
| <p>VOLVO PENTA</p> | | <p>107</p> |