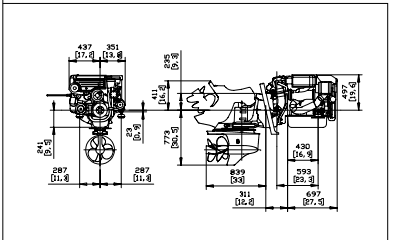
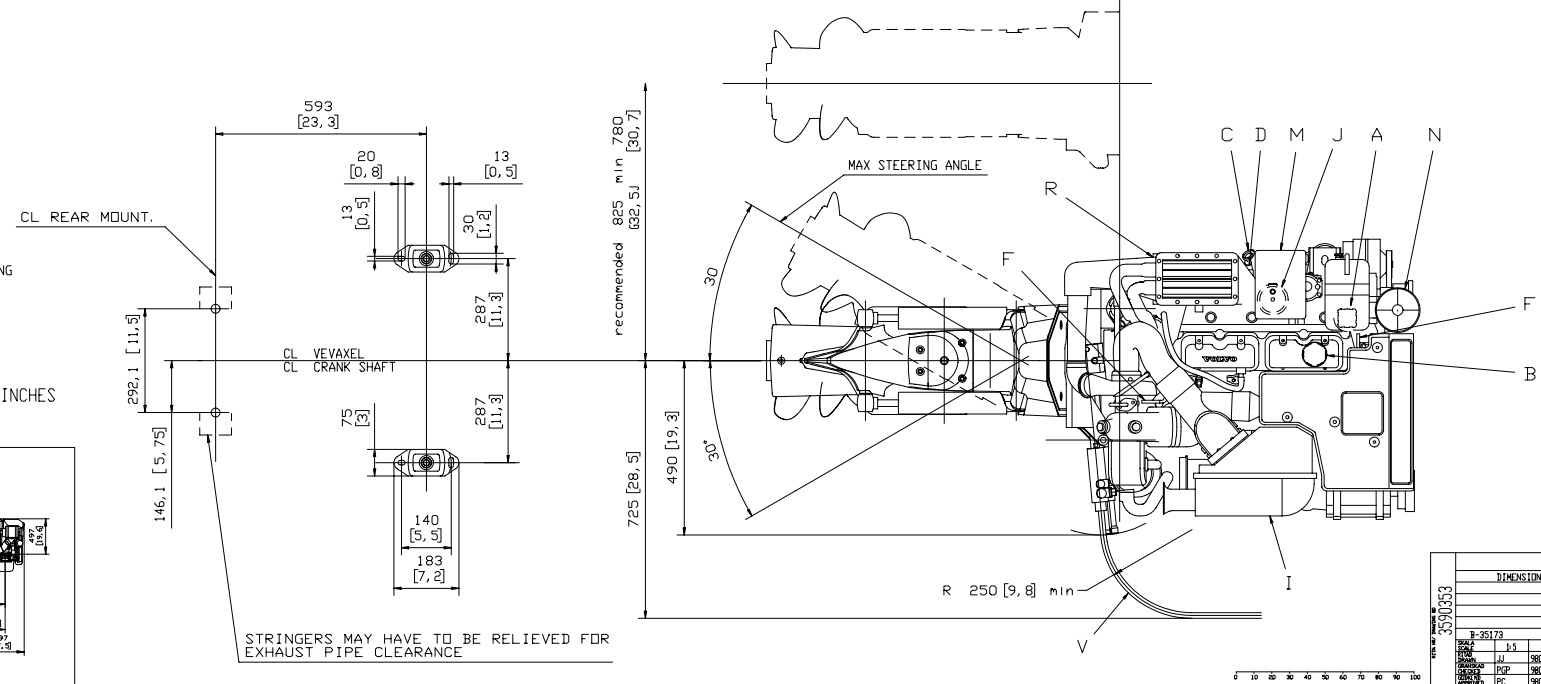
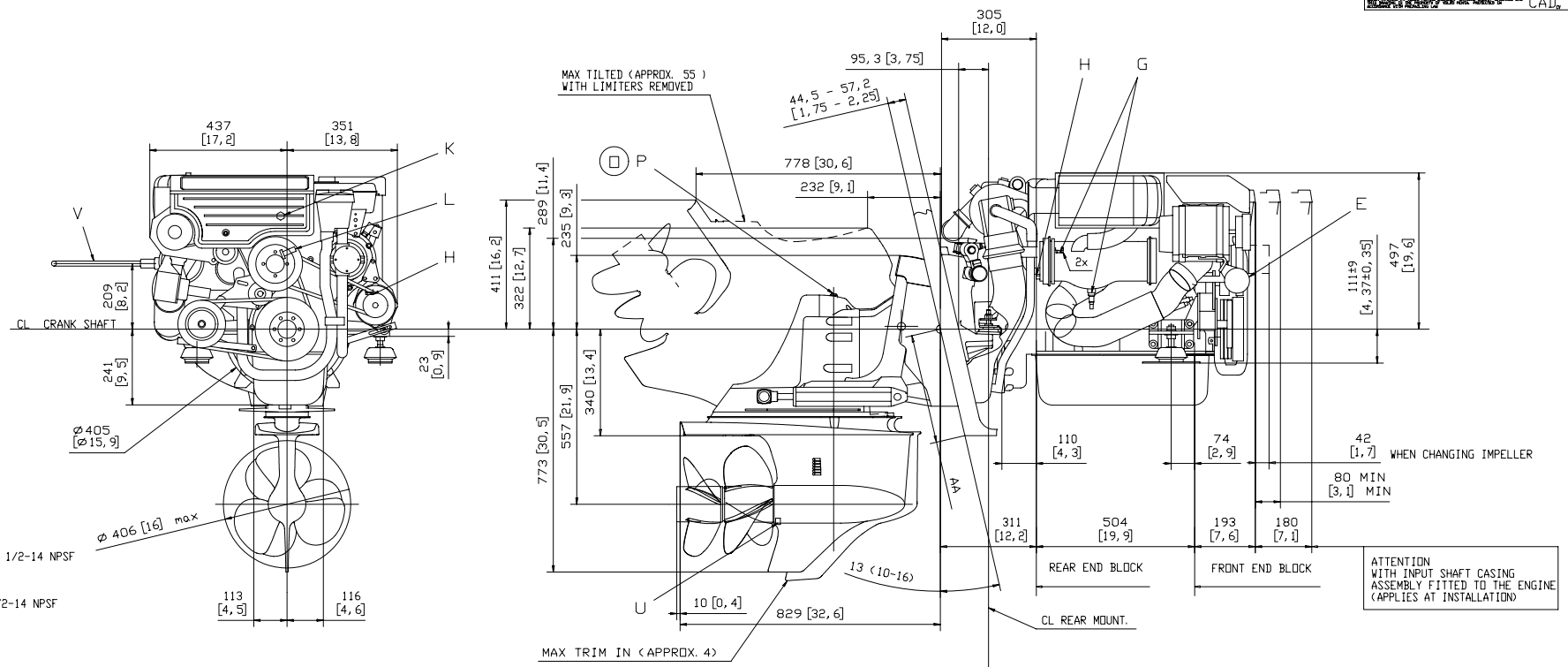


- (A) WATER FILLER CAP FRESH WATER
- (B) OIL FILLER CAP, ENGINE
- (C) OIL DIP STICK, ENGINE
- (D) OIL DRAIN (WITH PUMP), ENGINE
- (E) OIL FILTER
- (F) LIFTING DEVICE
- (G) WATER DRAIN, FRESH WATER
- (H) WATER DRAIN, SEA WATER
- (I) AIR FILTER
- (J) FUEL FILTER
- (K) HEAT WATER OUTLET PRESSURE SIDE 1/2-14 NPSF
- (L) HEAT WATER OUTLET SUCTION SIDE 1/2-14 NPSF
- (M) CONNECTION BOX
- (N) FILTER SEA WATER
- (P) OIL DIP STICK OUTBOARD DRIVE
- (R) WATER INLET
- (U) OIL DRAIN OUTBOARD DRIVE
- (V) STEERING CABLE FOR POWER STEERING

AA SEE DWG 7733849

DIMENSION IN MILLIMETRES AND INCHES



STRINGERS MAY HAVE TO BE RELIEVED FOR EXHAUST PIPE CLEARANCE

| VOLVO PENTA       |                       |
|-------------------|-----------------------|
| DIMENSION DRAWING |                       |
| NO. 3590353       | REV. 03               |
| P-35173           | TYPE KAD 32P-A / DP-S |
| DATE 980506       | BY 980508             |
| CHKD 980508       | DATE 980508           |
| DESIGNER 980508   | NO. 3590353           |
| PC                | SCALE 1:1             |
| PC                | DATE 03               |

